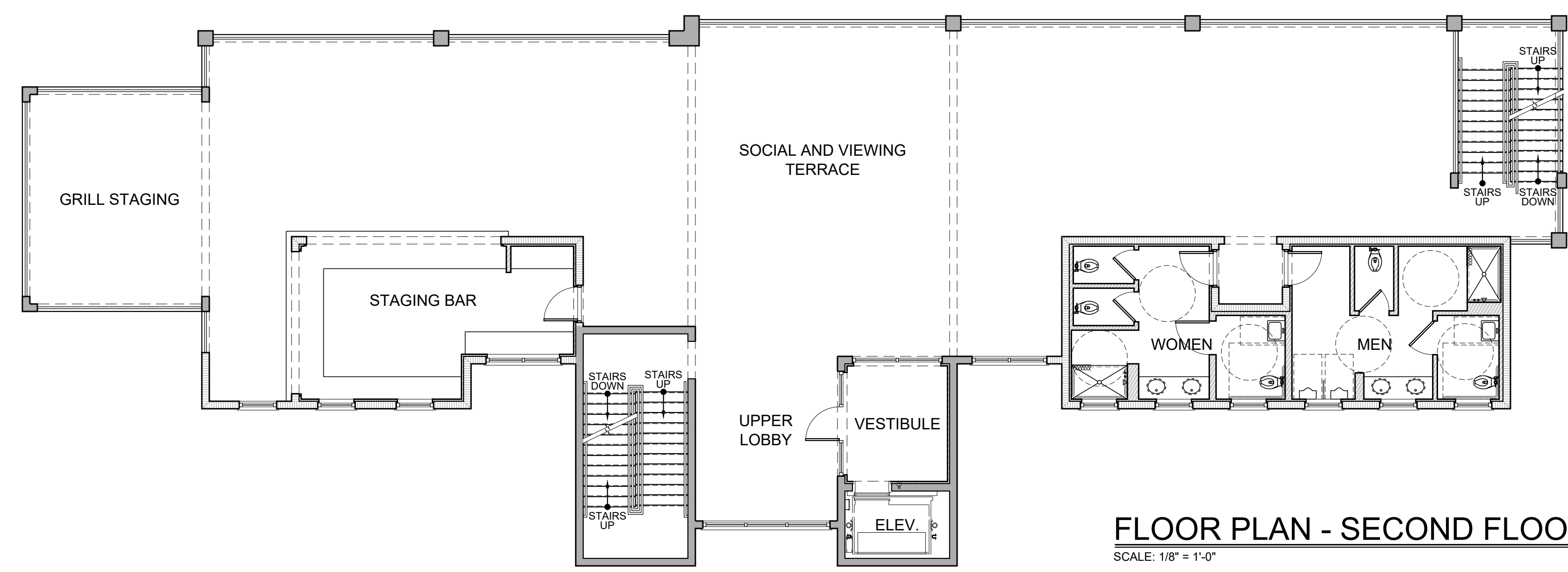
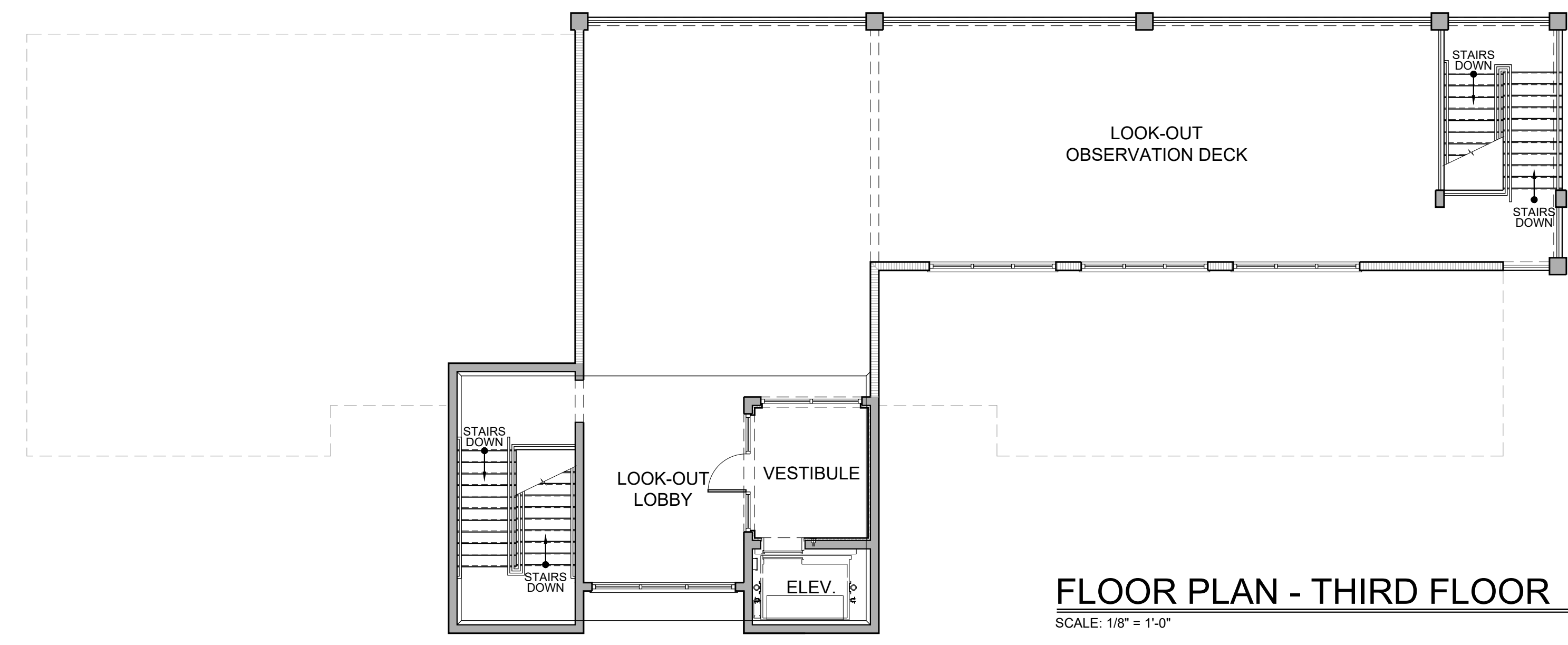


FLOOR PLAN - FIRST FLOOR
SCALE: 1/8" = 1'-0"



FLOOR PLAN - SECOND FLOOR
SCALE: 1/8" = 1'-0"



FLOOR PLAN - THIRD FLOOR
SCALE: 1/8" = 1'-0"

HUMPHREY • ROSAL
ARCHITECTS
1201 W. 10TH ST. NORTH
SUITE #100
NAPLES, FLORIDA 34103
TEL: (813) 285-4401
FAX: (239) 285-4441
e: humphrey@humphreyrosal.com

01/29/2024
DRAWN: _____
DATE: _____
REVISIONS: _____

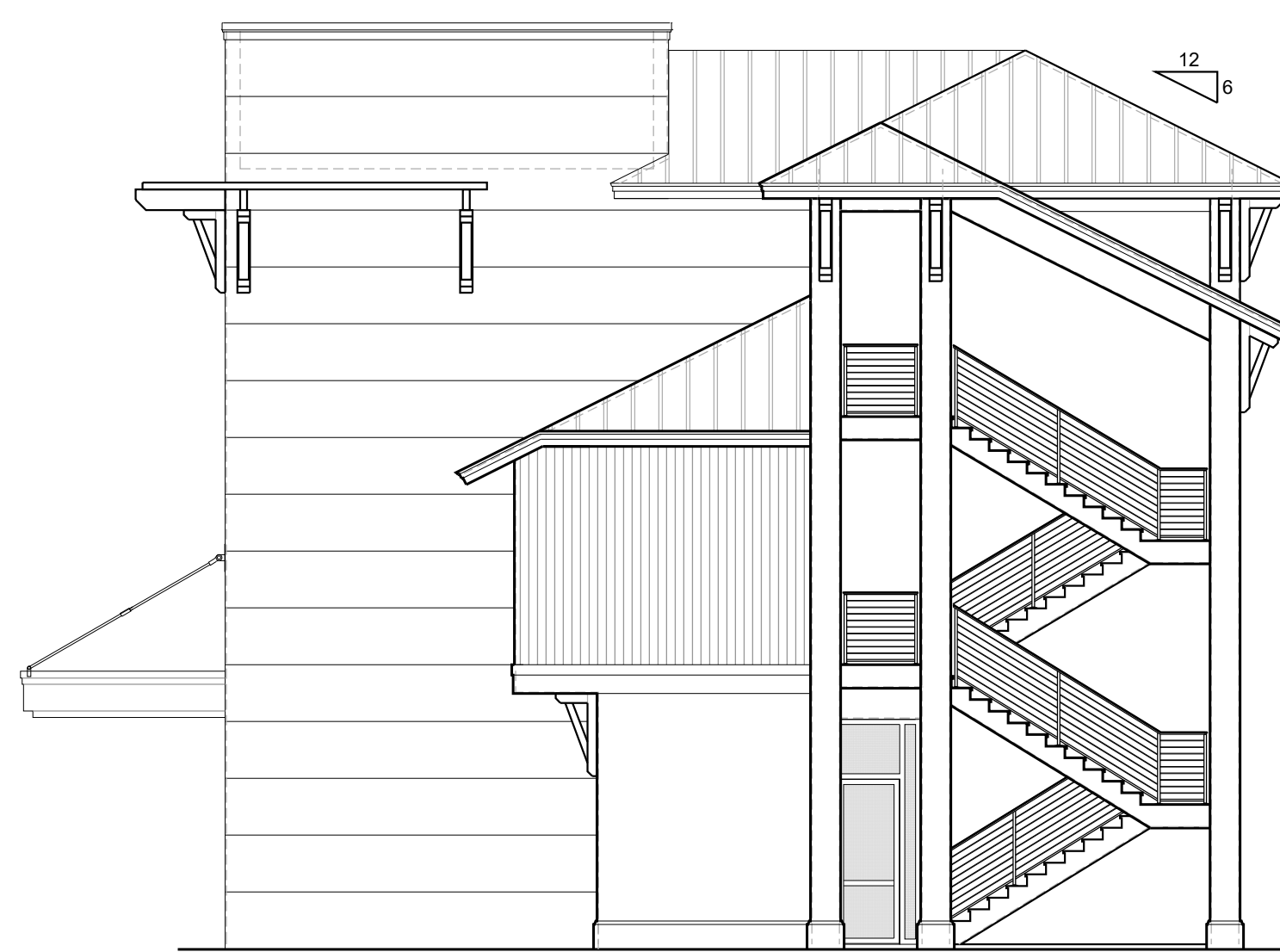
PROPOSED:
**THE COMMONS CLUB
BEACH CLUB**

FLOOR PLANS

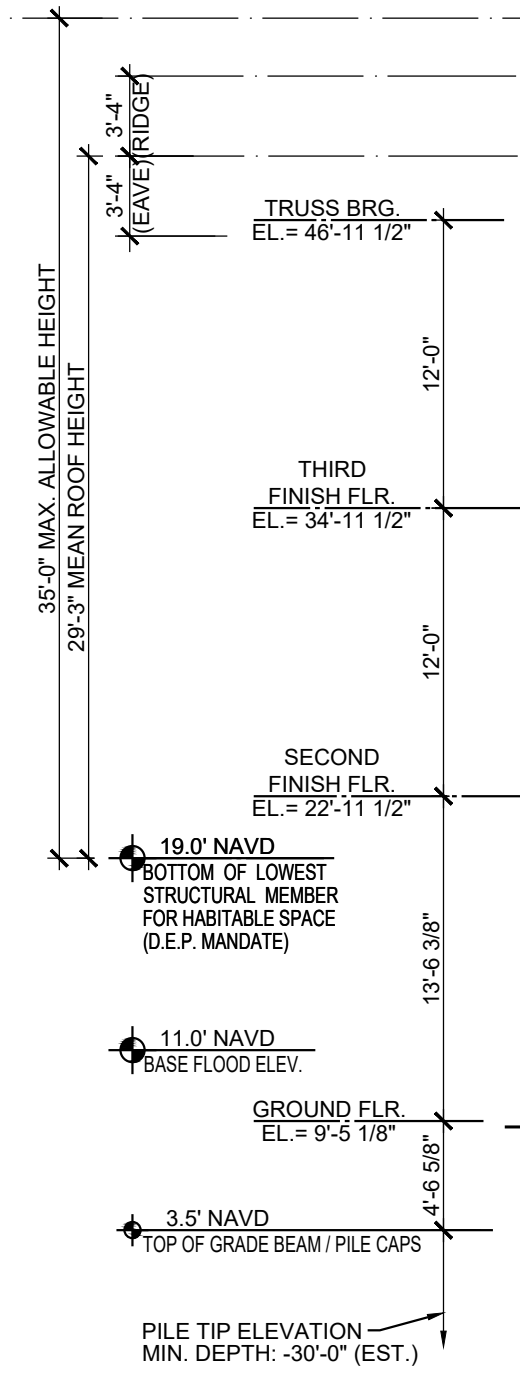
SHEET No.
A-01

I HEREBY CERTIFY THAT TO THE BEST OF MY KNOWLEDGE THE PROPOSED STRUCTURE HAS BEEN DESIGNED IN STRICT ACCORDANCE WITH THE FLORIDA BUILDING CODE, 8th EDITION, FLORIDA FIRE PREVENTION CODE, 8th EDITION, 2002-01 BUILDING CONSTRUCTION ADMINISTRATIVE CODE ORDINANCE, AND FLORIDA STATUTES.

DAVID M. HUMPHREY
FLORIDA REC. NO. 9763



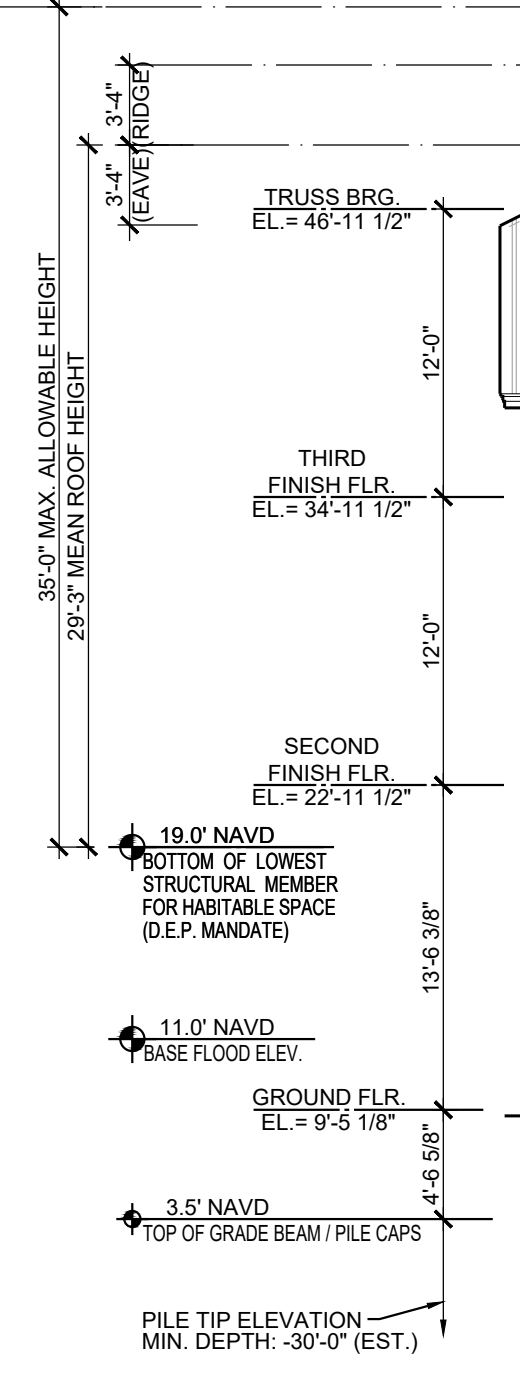
SIDE ELEVATION
 SCALE: 1/8" = 1'-0"



FRONT ELEVATION
 SCALE: 1/8" = 1'-0"



SIDE ELEVATION
 SCALE: 1/8" = 1'-0"



REAR ELEVATION
 SCALE: 1/8" = 1'-0"